



Sterling Avenue

Edgware

£348,500

A well proportioned, two double bedroom maisonette available with Davidson Frost-Wellings with a large garage.

With a large reception room, separate eat-in kitchen, two double bedrooms, a family bathroom, separate WC, private balcony and a large loft space providing huge storage potential. The flat is on the first floor with its own front door and is double glazed throughout.

The building has lovely communal gardens and can be found on a quiet no-through road equidistant from Edgware Station (Northern Line) and Stanmore Station (Jubilee Line).

Leasehold with approximately 96 years remaining.
Ground Rent of approximately £100 per annum.
Service Charge of approximately £500 per annum.
Barnet Council Tax Band D.

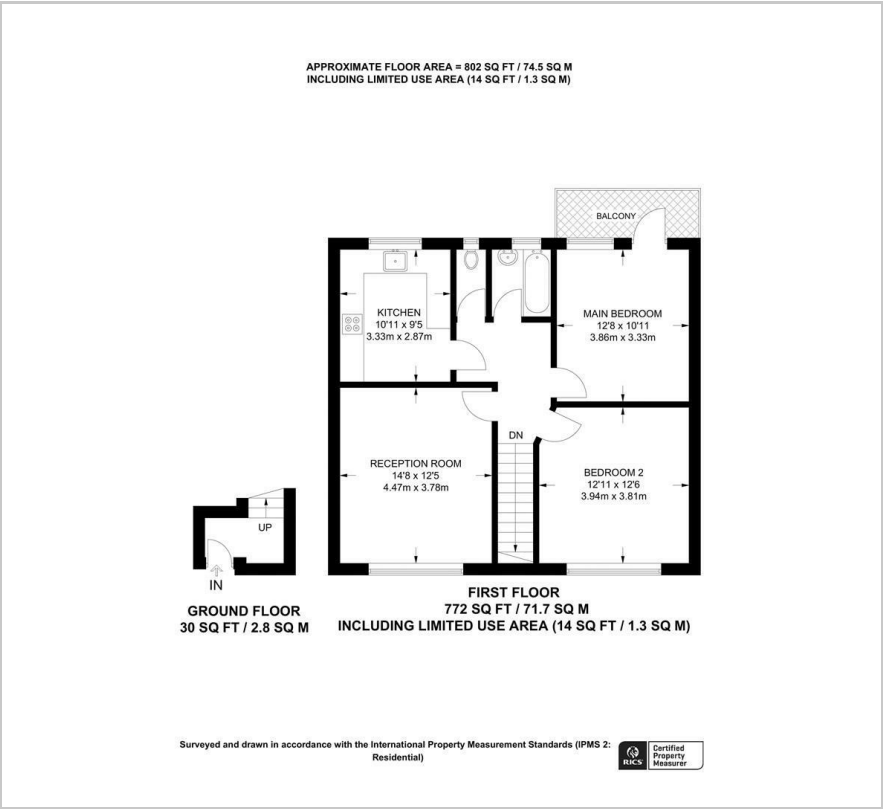
- Two Double Bedrooms
- Large Reception Room
- Eat-In Kitchen
- Private Balcony
- Garage and Off Street Parking
- Chain Free

Viewing

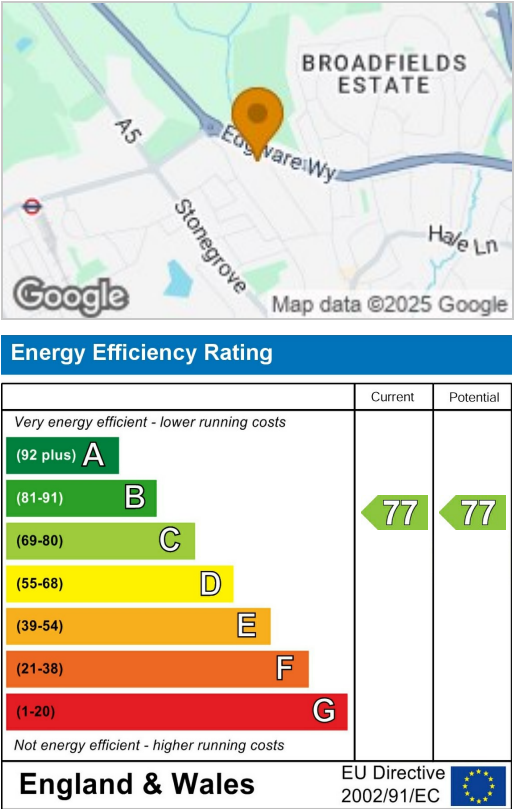
Please contact our Davidson Frost-Wellings Office on 020 8954 8806 if you wish to arrange a viewing appointment for this property or require further information.



Floor Plan



Area Map



These particulars, whilst believed to be accurate are set out as a general outline only for guidance and do not constitute any part of an offer or contract. Intending purchasers should not rely on them as statements of representation of fact, but must satisfy themselves by inspection or otherwise as to their accuracy. No person in this firms employment has the authority to make or give any representation or warranty in respect of the property.